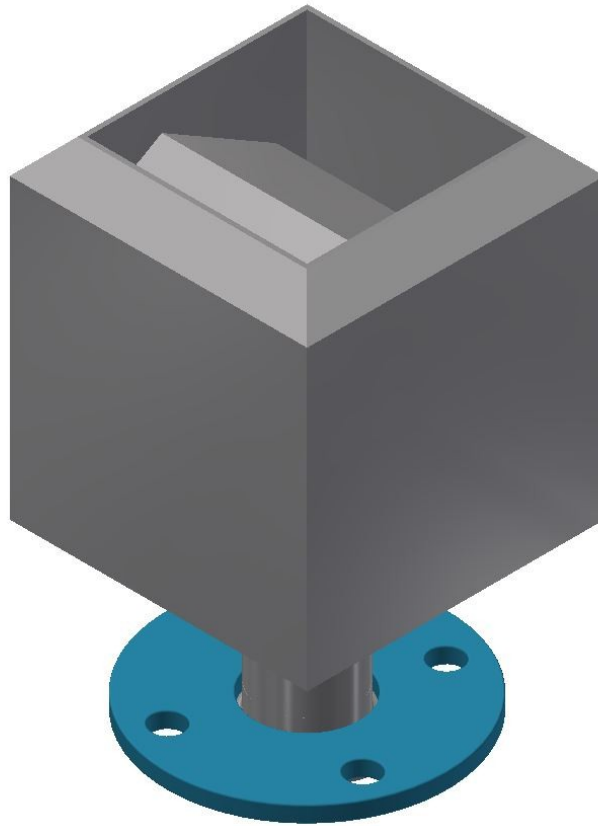


Product Information

WH Cylinders Vent Head Range



WORLD HEAT
CYLINDERS



High quality British manufactured Stainless Steel commercial steam and hot water solutions designed for any application.

WH Cylinders manufacture a full range of Vent Heads for use on vertical open-ended steam vent pipes.

All of our products are manufactured from high quality stainless steel under an ISO9001 certified quality management system in our purpose made manufacturing facility in Manchester.

Key Features

- High quality stainless steel
- 25 Year manufacturing warranty subject to annual maintenance
- ISO9001 certified quality management
- Efficient Baffle Design
- Weather & Heat Resistant Finish



Tudor House
Tudor Industrial Estate
Ashton Street
Dukinfield
Cheshire
SK16 4RN

Tel: 0161 343 8610
Fax: 0161 343 5585
Email: sales@whcylinders.co.uk

Product Information

WH Cylinders Vent Head Range



WORLD HEAT
CYLINDERS

World Heat VH Vent Head range are designed for use on vertical open-ended steam vent pipes, such as those found on Blowdown Vessels, Boiler Feed Tanks, De-Aerator Heads, Condensate Vessels, etc. The Vent Heads purpose is to remove entrained water from discharged steam in order to safely discharge dry steam to the atmosphere.

Vent Head Design

Steam enters the Vent Head through the Inlet Connection and is directed toward the internal baffle. The baffle causes entrained water droplets to collect on the internal surfaces of the Vent Head. Due to gravitational forces, the entrained water coalesces and collects at the bottom of the unit, making its way out of the Vent Head through the Inlet Connection. The internal drain allows the recovery of condensate to be fed back into the system hence increasing energy efficiency.

Materials

Body :	Stainless Steel
Flanged Connections :	Flanged EN 1092 PN16, Scotchkote 206N Green Fusion Bonded Epoxy Coated Mild Steel Backing Flange
Collar:	Metric Bore Pressed Collar
Pipe:	Metric Bore Welded Pipe
Finish :	Metallic Heat Resistant Paint

Product Code	Size	Inlet Connection	Width (mm)	Length (mm)	Height (mm)	Weight (kg)
VH2	DN50	Flanged EN 1092 PN16	175	175	295	4.9
VH2.5	DN65	Flanged EN 1092 PN16	200	200	320	6.4
VH3	DN80	Flanged EN 1092 PN16	225	225	345	7.8
VH4	DN100	Flanged EN 1092 PN16	250	250	370	9.5
VH6	DN150	Flanged EN 1092 PN16	350	350	480	17.8
VH8	DN200	Flanged EN 1092 PN16	400	400	530	24.0
VH10	DN250	Flanged EN 1092 PN16	450	450	590	32.1
VH12	DN300	Flanged EN 1092 PN16	500	500	640	41.7

If a different 'Inlet Connection' size or type is required, we are more than happy to manufacture a bespoke unit, please contact us directly for a quotation.

Operation

The Vent Head should be sized as the same nominal size of the vent pipe to be installed on. A suitable thread sealant or full-face gasket should be used on the joint between the vent pipe and the Vent Head itself.

Warning: Vent Heads must not be used for safety valve discharge pipes.

